



# RIVERPARC

R E S I D E N C E

EXECUTIVE CONDOMINIUM



## 2 activity clusters

From a golf driving range to a horse riding centre, look forward to not one but two special areas dedicated to hosting unique activities on the waterfront.

## Punggol Town Centre

Shop, dine and be entertained at the new town centre that will also link together public bus, LRT and MRT services and include a town square and visitor's centre.

## 3 promenade walks

Enjoy three wetland walks, each with its own charm and attractions, link together to form a continuous waterfront promenade.

## Conveniences

Be served by an excellent transport network with a LRT station at your doorstep, the Punggol MRT station and easy access via nearby expressways.

## Watersports hub

With a scenic waterway and the sea so close, be spoilt for choice by the amount of waterfront recreational activities you can choose from.

## Schools

Numerous primary and secondary schools are close by so that your school-going children need not travel far for quality education.



## Your gateway to a new beginning

Enter a world of luxury living right in the heart of a new waterfront city. One that is surrounded by worlds of excitement and serenity that only living by the river, sea and nature could bring. One that revolves around the convenience that only a new and family-friendly town can offer. And one that offers an entire river park of fun and relaxation right at home. Welcome to your new home at RiverParc Residence.

TO UPPER  
SERANGOON  
ROAD

TO KPE

TPE

ACTIVITY CLUSTER 2  
• Golf driving range  
• Plant nursery  
• Sports activities site  
• F&B

**RIVERPARC**  
RESIDENCE  
EXECUTIVE CONDOMINIUM

LORONG HALUS  
WETLAND

PEDESTRIAN BRIDGE  
(across Serangoon Reservoir  
to Lorong Halus Wetland)

RUSTIC  
PROMENADE

SUNRISE  
GATEWAY





**TPE**

**TOWN CENTRE**  
• First commercial cum residential sale site

**NATURE COVE**

**WATER DELIGHT**

**WATERSPORTS PROMENADE**

**HERITAGE TRAIL**

**UNDULATING PROMENADE**

**WATERWAY**  
• For cycling, walking, jogging, roller blading and kayaking

**ACTIVITY CLUSTER 1**  
• Horse riding centre  
• Outward Bound Singapore Reception Centre and Campsite  
• Park  
• F&B

**MARINA COUNTRY CLUB**

**PUNGGOL PROMENADE**  
• About 8.7km long  
• For cycling, walking, jogging and roller blading

**RUSTIC PARK AT CONEY ISLAND**  
• Nodal activities  
• Moving activities  
• Adventure camp & courses  
• Beach activities

# The new waterfront destination to live and play

Punggol, one of Singapore's newest towns, is now taking shape to become a vibrant waterfront city. A town with a rich coastal heritage, its balmy seaside location, scenic river and a new man-made waterway traversing through it, the new Punggol brings waterfront living to reality in the heartlands.

Look forward to many recreational activities that fully integrate the charms of nature and the sea with the spirit of a warm community. A life here offers not one, but three different worlds for you and your family to indulge in. The Active World, The Leisure World and The Convenient World.



## LEGEND

- A** New Punggol and Serangoon Reservoirs
  - Water-based activities
- B** Activity Cluster 1
  - Horse riding centre
  - Park
  - F&B
  - Outward Bound Singapore reception centre and campsite
- C** Punggol Promenade
  - About 8.7km long
  - For cycling, walking, jogging & roller blading
- D** Activity Cluster 2
  - Golf driving range
  - Plant nursery
  - Sports activities site
  - F&B

- E** Rustic Park at Coney Island
  - Nodal activities
  - Moving activities
  - Adventure camp and courses
  - Beach activities

--- LRT Line

■ Punggol Point Walk

■ Nature Walk

■ Riverside Walk



**RIVERPARC**  
RESIDENCE

TO KPE /  
UPPER  
SERANGOON  
ROAD

# The Active World

Discover new and thrilling venues, facilities and activity clusters that are sure to engage the entire family in all the outdoor fun and water sports that they love!







# 1 watersports hub 2 activity clusters 3 promenade walks

Never before can you enjoy so much fun, right where you live! For the first time, a diverse range of recreational activities are collected at 1 watersports hub and 2 activity clusters, and linked by 3 promenade walks for non-stop fun for the entire family!

Heaps of outdoor activities await, ensuring exciting weekends of family bonding and entertainment. Go horse riding and help boost the kids' confidence. Enjoy the sun, sand and sea at the connected Coney Island, or take to the waters and explore the area from a kayak! You can also perfect your golfing skills at the public driving range or enjoy being close to nature with a memorable family camping trip.

# The Leisure World

Relax, chill out and soak in the beauty of nature by the tranquil waterfront or in the lush bird sanctuary that is the Lorong Halus Wetland.





## Relaxation by the waterway Tranquility in nature

Punggol is unique because of its exciting waterfront location, complemented by the relaxing ambience of an idyllic village. Here, boardwalks create a rustic look and offer a leisurely way to cycle, rollerblade or jog down the scenic promenades that offer special views of the picturesque river and Serangoon Reservoir. Lookout points along the promenade are great venues for a spot of fishing or quiet moments with loved ones after dinner or drinks at the waterfront bistros and restaurants.

Enhancing the tranquillity is the nearby Lorong Halus Wetland, right across from the serene waters of the Serangoon Reservoir. This nature park also provides a new habitat created for birds, butterflies, dragonflies and other wildlife. Pack a picnic and the whole family can enjoy a great day out amidst reed beds and ponds while getting close to the numerous species of plants, birds and wildlife found within these peaceful surroundings.





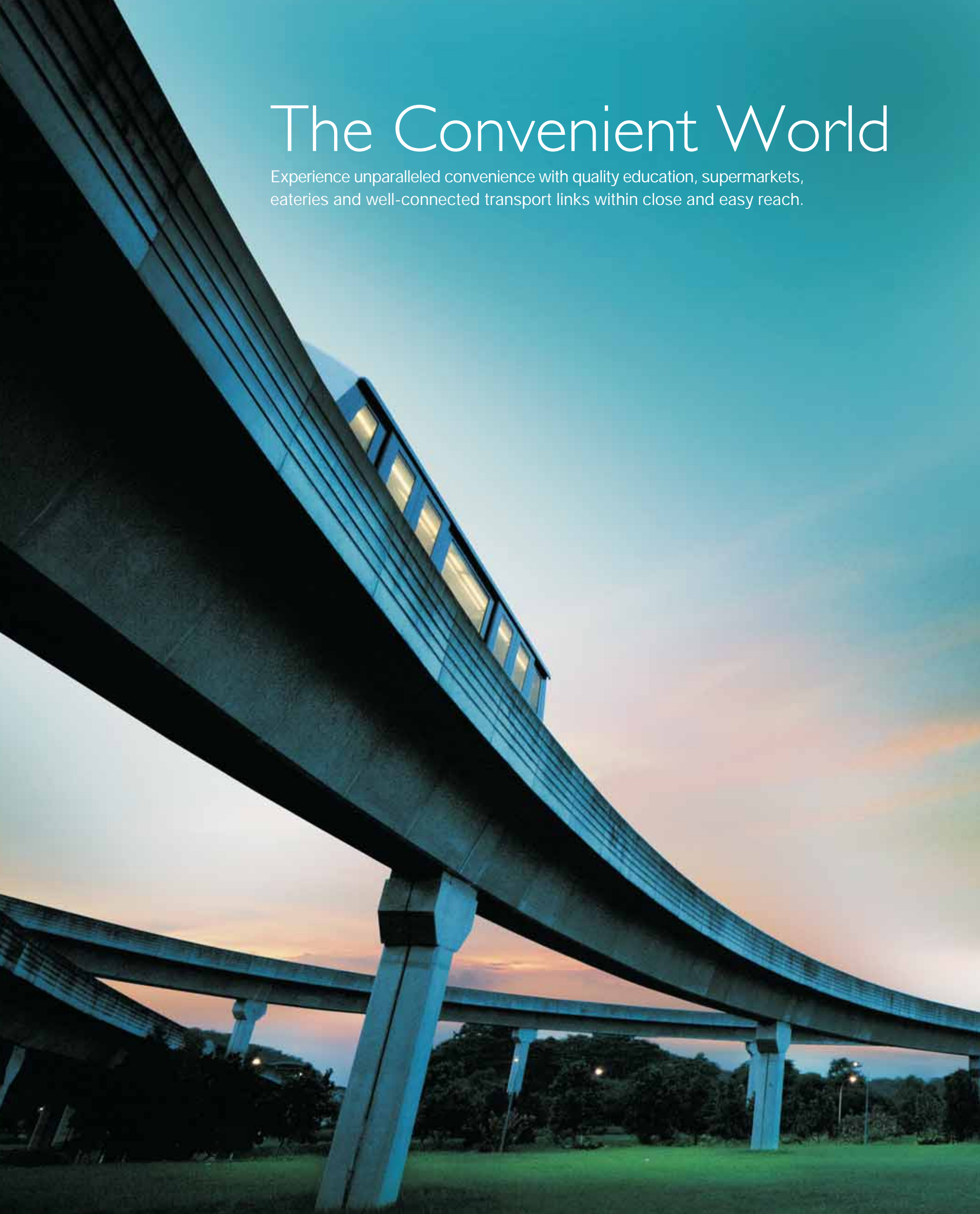
# A waterway of activities The centre of excitement

When there is water, there is life. With a man-made river running right through Punggol itself, waterfront living takes on a whole new dimension. All along the banks of the river, expect lush riverine parks that will offer watersports activities and house F&B outlets. You can cycle along the waterway, kayak in its waters or savour casual chic al fresco dining by its sparkling waters.

Look forward to a new Punggol Town Centre with an exciting cosmopolitan waterfront mall with numerous of shopping, dining and entertaining choices. Adding to this, more shopping and dining await at nearby Punggol Plaza, Rivervale Mall and Compass Point. You will definitely be spoilt for choice.

# The Convenient World

Experience unparalleled convenience with quality education, supermarkets, eateries and well-connected transport links within close and easy reach.





Punggol MRT



TPE

## Conveniently accessible Within easy reach

Be it for a delicious bite or for daily necessities and services, isn't it great to find eateries and supermarkets just a short stroll away? What's more, you have the luxury of an LRT station right at your doorstep to take you to the integrated Punggol MRT/LRT hub. From there, enjoy fast connections to the CBD and the rest of Singapore. There are also major expressways close by to reach anywhere you want to go quickly.

Your children will spend less time and hassle travelling to and from school. Within close proximity are well-established schools like Mee Toh School, Nan Chiau and Edgefield Primary Schools.







Enjoy the great outdoors,  
an exciting waterfront and true  
convenience from your home



# Welcome home to the comfort of luxury

Enter your home at RiverParc Residence and into an oasis of modern luxury. With spacious apartments, lush landscaping, security for peace of mind and unique facilities for the entire family, RiverParc Residence is truly luxury living in a world of its own and one that you can call home.







Here, large open spaces for relaxation and enjoyment are adorned with flourishes of tropical flowers and plants. Inspired by its location near the river and nature, RiverParc Residence boasts of its very own river as the main focal point for water activities. The beauty is further enhanced by myriad pockets of garden parks all around, allowing you to just soak in the tranquility that nature brings.



A river world, a park world  
Enjoy both, here at home



Imagine, an entire river of both fun and relaxation, at your doorstep! Kids are sure to have a splashing fun time in the specially designed children's spray cove, or at the child-friendly family pool where they can hop into the delightful adjoining bubble pool. As you keep an eye on them, why not luxuriate in a relaxing hydrotherapy spa pool? Lazy afternoons can also be spent lounging by the pool on sun decks, or in the unique water deck that is right by the large lap pool.



Connecting the river world and the park world is the magnificent glass clubhouse that seemingly floats above the crystal waters of the pool. This venue will no doubt, make a lasting impression on all your guests whenever you host a function, gathering or party.

Walk into the park world and be greeted by a peaceful vista. Here, garden cabanas surround a sand beach by a stream that flows gently into a beautiful koi pond. Discover an outdoor fitness area right by the yoga deck and reach the tennis court and putting green, a boon for golfing enthusiast to practice their swing. Along a shady tree-lined trail, a tea pavilion awaits. This is the perfect place to savour afternoon tea before enjoying a fun barbecue evening at the al fresco dining area that also boasts of a teppanyaki grill.

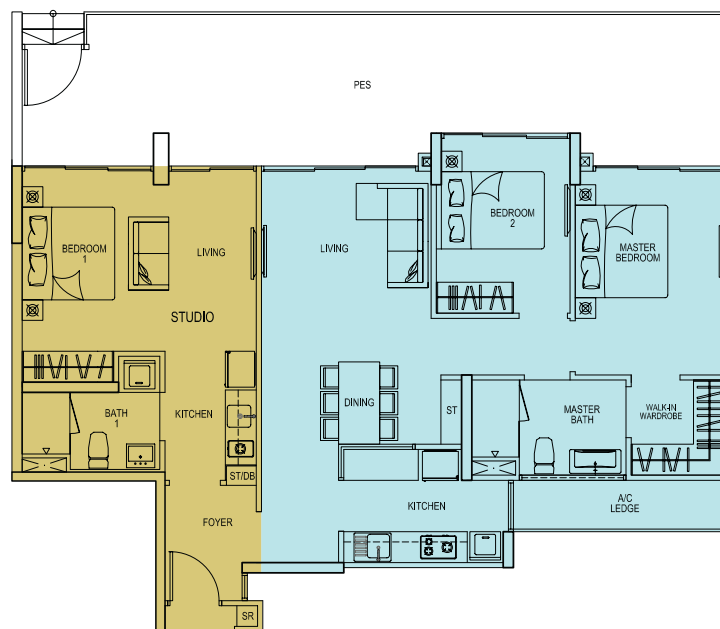


# Two homes, one roof

The exclusive number of Dual Key Units is the perfect answer for those whom space and privacy are of utmost concern. These uniquely crafted family units offer an alternative lifestyle for the discerning few. Enter your main door and discover a self-contained studio with its very own entrance, right next to the main family dwelling. This creates an “under one roof” living concept, while retaining the privacy of both units.

Transform the studio into a home office for a SOHO (small office, home office) concept so you can work close to home. Give your grown-up child the privilege of his own private space while still staying close to you, or offer your parents a home within your home. With the unique configuration of Dual Key Units, you can explore many possibilities of utilising the living space to best suit your lifestyle.

## Under One Roof



Extra Room with Separate Key

Family Unit

Suggested usage

A. Your Home Office



B. Your Grown-up Child



C. Your Grandparents



D. Your Tenants



Your Home



## COMPANY PROFILE



NIN Residence



Palm Jumeirah Villas, U.A.E



Natura Loft

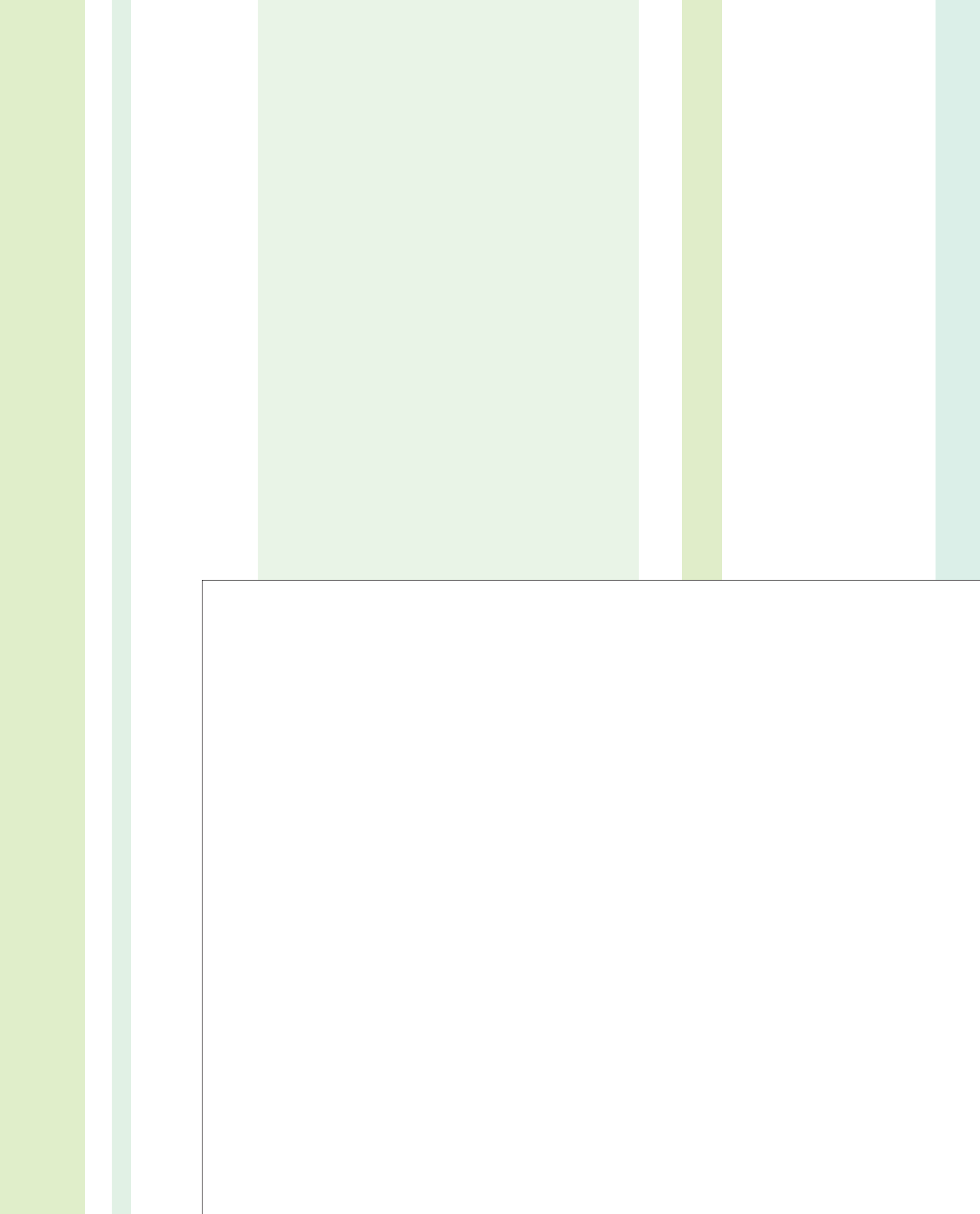
RiverParc Residence is developed by Qingjian Realty (Punggol) Pte Ltd. Qingjian Group Co., Ltd is the holding company of Qingjian Realty (Punggol) Pte Ltd.

Qingjian Group Co., Ltd was established in 1952, with its scope of business ranging from project contracting, real estate development, international economic and technological co-operation, property investment, technology research & design, engineering consultancy and property management. As one of the earliest Chinese construction companies with ISO9001 compliance, the Group had a turnover of 16.2billion RMB and was listed No.143 in ENR The Top 225 International Contractors in 2009.

Since starting its international business from 1983, Qingjian Group Co., Ltd has extended its market in more than 30 countries or regions. Landmark buildings such as the Palm Jumeirah Villas in U.A.E and the National Conference Centre in Lesotho have won much fame for the Group. In China, the Group have built public properties such as the 2008 Olympic Sailing Centre and the Liuting International Airport in Qingdao, as well as residential and commercial developments such as Olive City and Haiwei Plaza – with the total development area exceeding 3,000,00 square metres.

Since entering the Singapore market in 1999, the Group's operations have covered a wide spectrum of building projects – from private and public residential to commercial and industrial developments. This includes Natura Loft, a HDB-DBSS development launched in 2008, and which won the BCA Green Mark 2010 Award (Gold Plus) – an achievement for which the Group is justifiably proud. Another notable development, the 219-unit NiN Residence, offers beautifully designed luxury residences, conveniently located opposite the Potong Pasir MRT station.

As the company gains in stature, Qingjian Group Co., Ltd will continue its mission to wholeheartedly create outstanding masterpieces enhanced within favorable environments, for the benefit of its customers.





ENQUIRIES: 6858 5666 [www.riverparc.sg](http://www.riverparc.sg)

Developer: Qingjian Realty (Punggol) Pte. Ltd. (ROC: 201022169C) Developer's Licence No.: C0743 Lot/Mukim No.: Lot 02362T MK21 at Punggol Drive/Punggol East Tenure of Land: 99 years leasehold commencing 27 December 2010 Building Plan No.: A0781-00030-2010-BP01 dated 06 May 2011 Expected Date of T.O.P.: 31 August 2014 Expected Date of Legal Completion: 31 August 2017

While every reasonable care has been taken in preparing this brochure and in constructing the models and showflats, the Developer and the Marketing Agent(s) cannot be held responsible for any inaccuracies or omissions. Visual representations, models, showflat displays and illustrations, photographs, art renderings and other graphic representations and references are intended to portray only artistic impressions of the development and cannot be regarded as representations of fact. Floor areas are approximate measurements and are subject to final survey. The property is subject to final inspection by the relevant authorities to comply with the current codes of practice.

All information, specifications, rendering, visual representations and plans are current at the same time of publication and are subject to change as may be required by us and/or the competent authorities, and shall not form part of any offer or contract nor constitute any warranty by us and shall not be regarded as statements or representations of fact. All plans are subject to amendments as directed and/or approved by the building authorities. The Sale and Purchase Agreement shall form the entire agreement between us as the Developer and the Purchaser, and shall supersede all statements, representations or promises made prior to the signing of the Sale and Purchase Agreement and shall in no way be modified by any statements, representations of promises made by us or the Marketing agent(s).